

TRAILERS RE-ENGINEERED

Durability is what defines Wells Cargo — we've built reliable trailers for over 60 years. Our new, re-engineered trailers are designed with 3-times the life expectancy of similar models in their class. They're also designed to be lighter, extra durable and more corrosion resistant than ever before.



With a Wells Cargo behind . . . you never look back!

**WELLS
CARGO®**



100

*Functionality in its purest form. The **100 Trim Level** may not stand out in a crowd, but it knows no limits for getting the job done. At its core, the **100 Trim Level** features all the benefits of both the durable Uni-Lock Frame and **ArmorTech** corrosion protection. Simple for the sake of utility.*

- ✓ 16" OC Vertical Wall Posts
- ✓ 24" OC C-Channel Crossmembers
- ✓ 24" OC Semi-Trailer, Anti-Snag Roof Bows
- ✓ ArmorTech Coated A-Frame
- ✓ 2" Sand Pad
- ✓ Bias Ply Tires with Silver Steel Wheels
- ✓ 5" Steel Bar Locks
- ✓ 3/4" DryMax Flooring
- ✓ .030 Aluminum Exterior with 8" Screw Pattern
- ✓ 12" Starbright Stoneguard
- ✓ Entry-Level Level Trim Accents
- ✓ 16"H 3/8" DryMax Kickplate (No Wall Liner)
- ✓ No Dome Light
- ✓ No Side Door



300

*There may not be a better example of a great price value equation than the **300 Trim Level**. An excellent blend of form and function, the **300 Trim Level** sports a 32" side door, rear ramp door for easy access and just enough ATP to show that you mean business. Value has a new standard-bearer.*

- ✓ 16" OC Vertical Wall Posts
- ✓ 24" OC C-Channel Crossmembers
- ✓ 24" OC Semi-Trailer, Anti-Snag Roof Bows
- ✓ ArmorTech Coated A-Frame
- ✓ 2" Sand Pad
- ✓ Bias Ply Tires with Silver Steel Wheels
- ✓ 5" Steel Bar Locks
- ✓ 3/4" DryMax Flooring
- ✓ .030 Aluminum Exterior with 6" Screw Pattern
- ✓ 16" Starbright Stoneguard
- ✓ Standard Level Trim Accents
- ✓ 3-Ply Birch Wall Liner
- ✓ **12V LED Dome Light (1) with Wall Switch**
- ✓ **32" Side Door with Flush Lock (6' & 7' Wide Models)**
- ✓ **Plastic Hold Backs**
- ✓ **Sidewall Vents**

LEGEND

- ✓ STANDARD Feature
- ✓ UPGRADED Feature
- ✓ **ADDITIONAL Feature**

*4' wide models feature a rear swing style door (all trim levels)

**4' and 5' wide models do not include a side door as standard equipment (all trim levels)



Shown with optional multi-color exterior.

500

Moving up to the **500 Trim Level** makes perfect sense if you appreciate convenience, low maintenance and a little flair. Starting with the standard silver aluminum wheels and continuing with the deluxe trim accents, it's no wonder the **500 Trim Level** is our most popular upgrade.

- ✔ 16" OC Vertical Wall Posts
- ✔ 24" OC C-Channel Crossmembers
- ✔ 24" OC Semi-Trailer, Anti-Snag Roof Bows
- ✔ Sidewall Vents
- ✔ ArmorTech PLUS Coated A-Frame
- ✔ 6" Sand Pad
- ✔ Rainier Radial Tires with Silver Aluminum Wheels
- ✔ 45" Aluminum Bar Locks
- ✔ 3/4" DryMax Flooring - Painted Gray
- ✔ .030 Aluminum Exterior with Smooth Bonded Exterior (No Screws)
- ✔ 24" Starbright Stoneguard
- ✔ Deluxe Anodized Trim Accents
- ✔ 3/8" DryMax Sidewall Liner
- ✔ 12V LED Dome Lights (2) with Wall Switch
- ✔ 36" Side Door with Flush Lock (6' & 7' wide models)
- ✔ Aluminum Door Hold Backs
- ✔ **Additional Pair of LED Tail Lights**
- ✔ **Upgraded Exterior Ramp Door Trim Wrap**
- ✔ **Fold-Down Stabilizer Jacks**
- ✔ **1000 lb. Floor Tie-Down Rings (4)**
- ✔ **12" DryMax Ramp Extension**



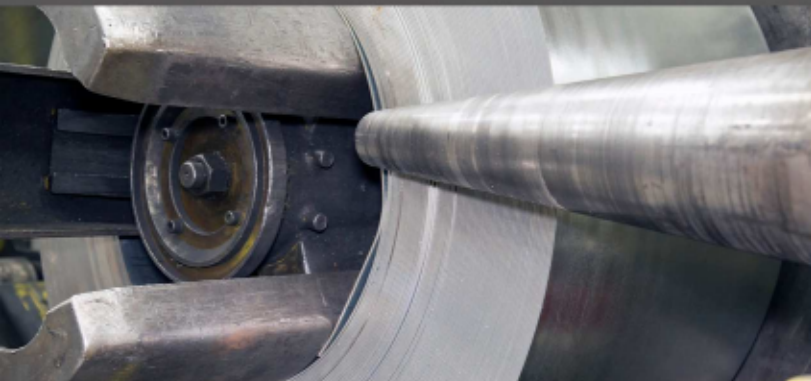
700

Ultimate performance with style and safety that's a step ahead and a step above the competition. We held little back when we created the **700 Trim Level**. Upgraded premium features inside and out, plus Goodyear® Radial Tires, Back-Up Lights and our LED Flasher System for the safest trailer on the road today.

- ✔ 16" OC Vertical Wall Posts
- ✔ 24" OC C-Channel Crossmembers
- ✔ 24" OC Semi-Trailer, Anti-Snag Roof Bows
- ✔ ArmorTech PLUS Coated A-Frame
- ✔ 6" Sand Pad
- ✔ 45" Aluminum Bar Locks
- ✔ 3/4" DryMax Flooring - Painted Gray
- ✔ 36" Side Door with Flush Lock (6' & 7' Wide Models)
- ✔ Aluminum Door Hold Backs
- ✔ Additional Pair of LED Tail Lights
- ✔ Upgraded Exterior Ramp Door Trim Wrap
- ✔ Premium Anodized Trim Accents
- ✔ Goodyear Radial Tires with Black Aluminum Wheels
- ✔ .030 Aluminum Exterior with Smooth Bonded Exterior (No Screws) and Multi-Color
- ✔ 24" ATP Stoneguard
- ✔ White TPO Wall Liner (5.2mm)
- ✔ 12V LED Chandelier Vent Light (1) with Wall Switch
- ✔ 14" x 14" Non-Powered Roof Vent
- ✔ Drop Down Stabilizer Jacks
- ✔ 5000 lb. Floor Non-Swivel D-Rings (4)
- ✔ 12" Premium Aluminum Ramp Extension
- ✔ **Ramp Door Transition**
- ✔ **Side Surface Mount Back-Up Lights**
- ✔ **LED Safety Flasher System**

ADVANCED CORROSION PROTECTION

100% of our steel frame (chassis, walls and roof) is dipped into a massive 8000 gallon tank of the ultimate metal treatment defense against rust and corrosion — **ARMORTECH**. Originally engineered for overseas containers, it is impervious to moisture and today's harsh, anti-icing agents. No rust creep!



HIGH-STRENGTH, LOW-ALLOY (HSLA) ROLL-FORMED STEEL

How do you build the strongest trailer in the industry? Start with the strongest steel! The same quality and specifications of steel found in the auto industry. Higher strength-to-weight ratio and more corrosion resistant. Stronger **and** rust resistant? Now that's the one-two punch of a market leader!

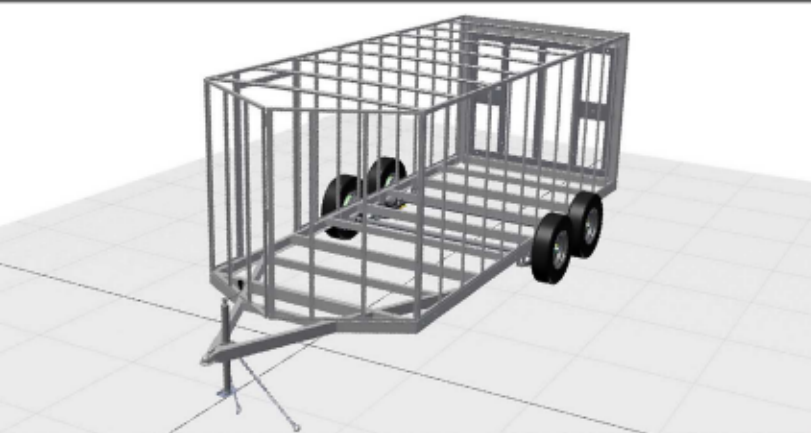
ENTIRE FRAME ROBOTICALLY WELDED

Trailer frames have to perform under extreme speeds and road conditions. Quality welds are crucial. With robotic welding, welds are perfect every time for better consistency, depth of penetration and bead size. This allows for greater cage stiffness and less twisting in real world situations.



PATENT-PENDING FRAME DESIGN

"Think Big" was our motto. We started from the ground up and questioned every convention that crossed our path. The result was a stronger, lighter and smarter frame. The progressive Uni-Lock™ chassis design nests our double-flanged crossmembers inside the main rail for added support.



**WELLS
CARGO®**

With a Wells Cargo behind . . . you never look back!

www.wellscargo.com

Specifications, features & available options subject to change without notice.
©Wells Cargo 2017 Form WC_VG_FLYER_0317